

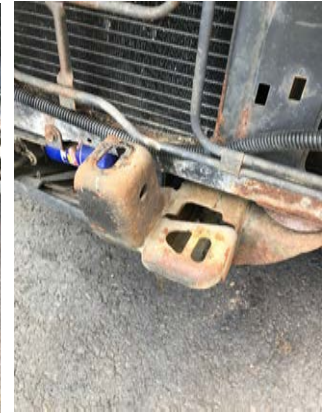
NOTE: DRY FIT BUMPER BEFORE PAINTING!

LETTER	DESCRIPTION	QTY.
A	1/2" X 1 1/4" LONG HEX BOLT	10
B	1/2" FLAT WASHER	20
C	1/2" LOCKNUT	10
D	7/16" X 1 1/4" LONG HEX BOLT	2
E	7/16" FLAT WASHER	4
F	7/16" LOCKNUT	2
G	1/2" X 1" LONG BUTTON HEAD BOLT	6





**STEP 1** - REMOVE STOCK BUMPER AND PLASTIC AIR DUCT.



**STEP 2** - REMOVE CLIPS SHOWN IN PICTURES ABOVE.



**STEP 3** - SLIDE BUMPER CENTER SECTION ONTO FRAME RAILS AND MOUNT WITH HARDWARE SHOWN ON SHEET 1.



**STEP 4** - INSTALL BUMPER END SECTIONS WITH HARDWARE SHOWN ON SHEET 1 AND ADJUST ENDS AND CENTER BEFORE TIGHTENING.



**STEP 5** - INSTALL BULL BAR WITH HARDWARE SHOWN ON SHEET 1.



**FINISHED**

