

Jeep Grand Cherokee Weld-In Sliders

DISCLAIMER: ALL DIRECTIONS ARE THE SAME FOR BOTH DRIVER'S AND PASSENGER SIDE OF VEHICLE

Preparation-

- 1) Starting at the front door jam, place a mark at the same angle as the rocker panel on the highest point of the radius and continue that mark all the way to where the rocker meets the pinch weld

You Will Need:

- Any type of marker such as a paint marker or a permanent marker

- 2) Mark along the top of the rocker all the way from the front to the back
- 3) At the rear of the rocker panel, continue the mark you made straight around towards the inner fender
- 4) Place a mark above the pinch weld where the rocker panel meets the pinch weld all the way to the front end of the rocker panel
- 5) Remove both driver's side and passenger side rear wheels

You Will Need:

- Floor jack or other type of jack
- Impact or breaker bar
- Sockets

- 6) Set the rear of the vehicle in a secure position

You Will Need:

- Jack stands or other type of supporting device

- 7) Repeat steps one through five on opposite side of vehicle

Cutting-

- 1) Start by cutting down along the top of the pinch weld from front to rear
- 2) Cut the rear piece of the rocker panel out of the inner fender
- 3) Cut along the top of the rocker panel directly below the doors all the way to the mark you make at the front of the vehicle
- 4) At the front of the rocker panel, cut along your mark while making sure to not cut out the section towards the inner fender. This part will be used in welding later in the project
- 5) Cut out the inner rocker to make room for the weld-in rock slider to fit width-wise
- 6) Cut along the top of the pinch weld like step one and follow the same angle. Do not remove the pinch weld
- 7) Cut straight in towards inner rocker where your upper line was to remove the rest of the inner rocker like you did in step three

Welding-

- 1) Once the rocker panel and inner rocker are removed, set the weld-in rock sliders in position to see if any spots need to be ground down for a tight, clean fit
- 2) Once fitting is nice and clean, place tack welds in each corner and in the center on the top and bottom sides of the sliders

You Will Need:

- Welding helmet
 - Welding gloves
 - Any type of MIG welder
- 3) The weld-in rock sliders must be welded completely along the top, sides, and bottom pinch weld to make everything structurally strong again

You Will Need:

- Welding helmet
- Welding gloves
- Any type of MIG welder

Links and Other Media:

Affordable Offroad Website- <https://affordableoffroad.com/>

WJ Main Page- <https://affordableoffroad.com/product-category/jeep-grand-cherokee-wj-99-04/>

Reference Pictures:

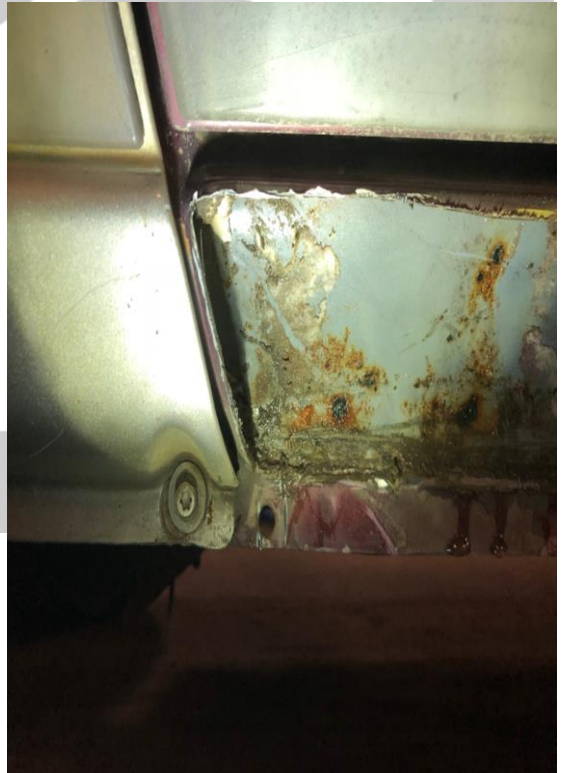
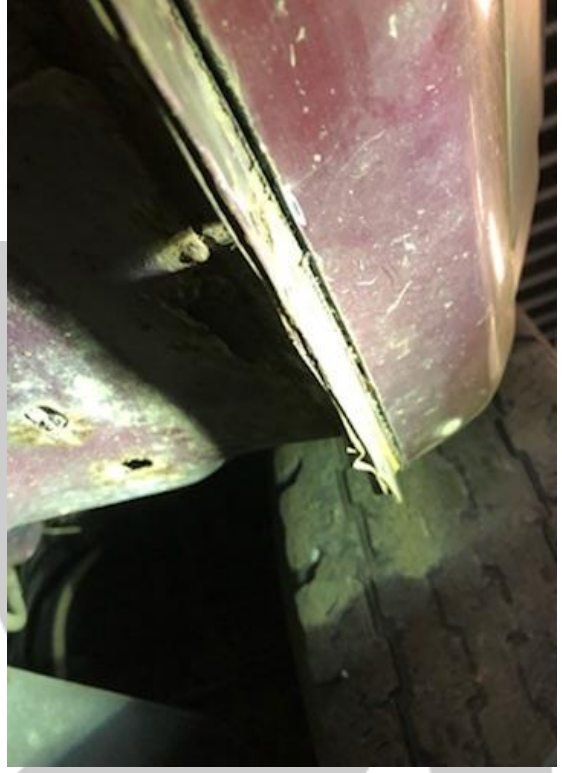
Preparation:





Cutting:





Welding:

